



User Manual

Making Online Decisions (MOD) System

REVISED MARCH 2021



Contents

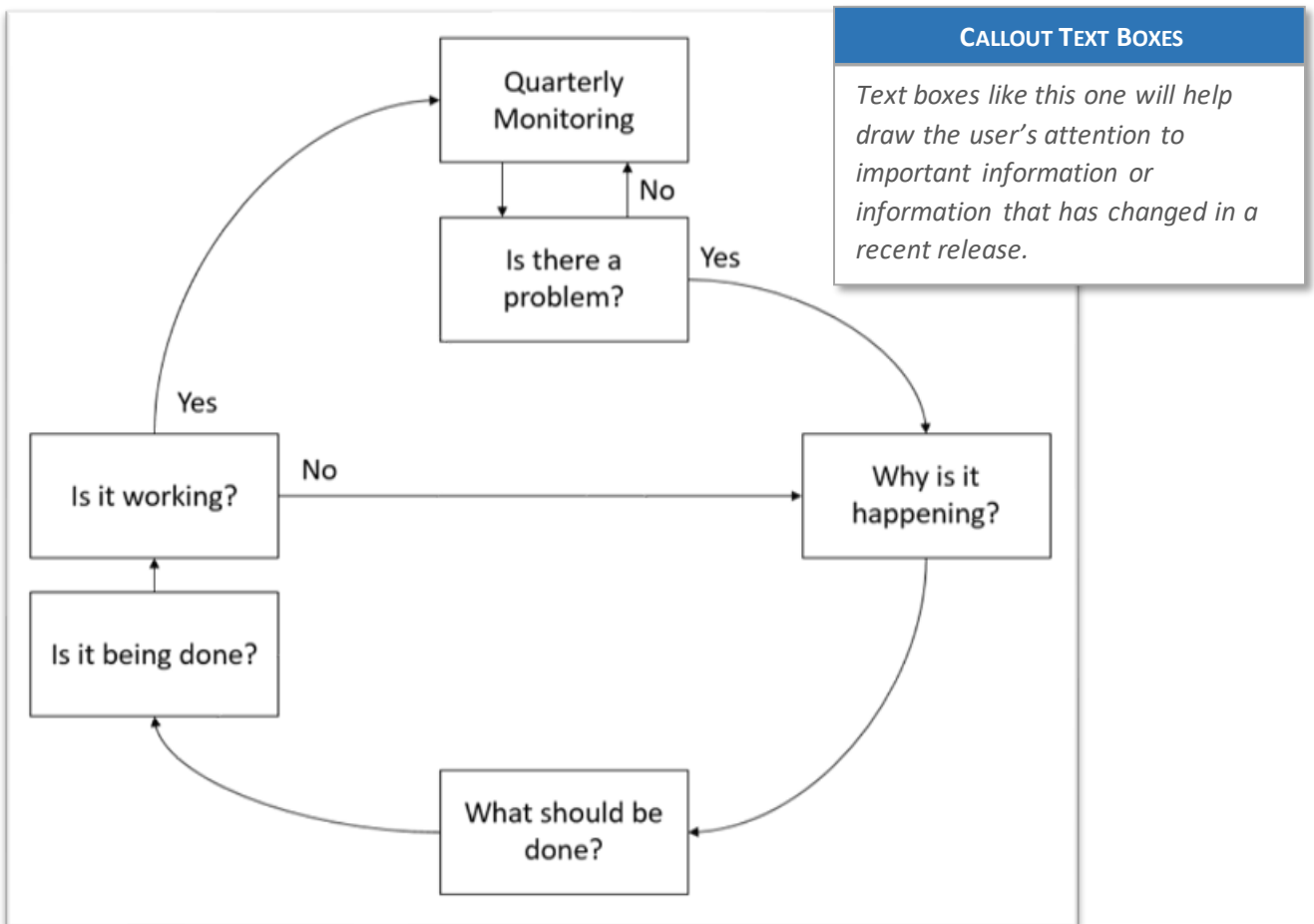
- Introduction1
 - What is the Making Online Decisions (MOD) system?.....1
- Navigating the MOD2
 - Triggering the MOD and Using the MOD Dashboard.....2
- Getting Started: Is there a Problem?3
- Why Is It Happening?4
- What Should Be Done?5
- Is It Being Done?.....6
- Is It Working?7
- MOD Dashboard8

Introduction

What is the Making Online Decisions (MOD) system?

The MOD helps identify children who are falling below their peers in language development, and it recommends strategies that caregivers can use to improve language. The recommended strategies are tailored to the child's performance on the ECI. After you and the caregivers decide on the specific strategies to use, the MOD will then help you determine if the strategies are working, which is based on the child's level of improvement on the ECI. The strategies recommended by the MOD will adapt to the child's ECI scores. So, as his/her language becomes more sophisticated, the recommended strategies will reflect these changes so that caregivers provide an environment that supports and encourages more advanced language from the child. The keys to the MOD are:

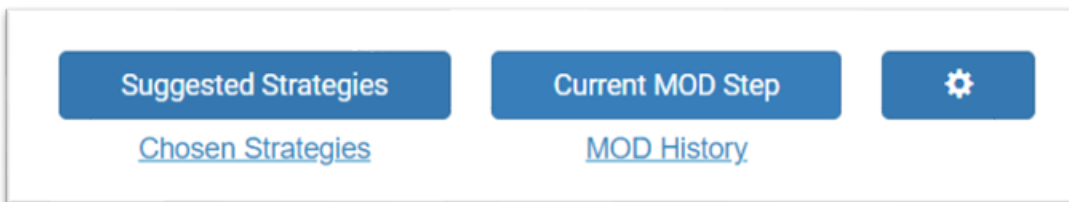
- Early identification
- Intervention recommendations customized to the child's current language ability
- Progress monitoring of the child's response to the intervention recommendations
- Monitoring of intervention fidelity of implementation



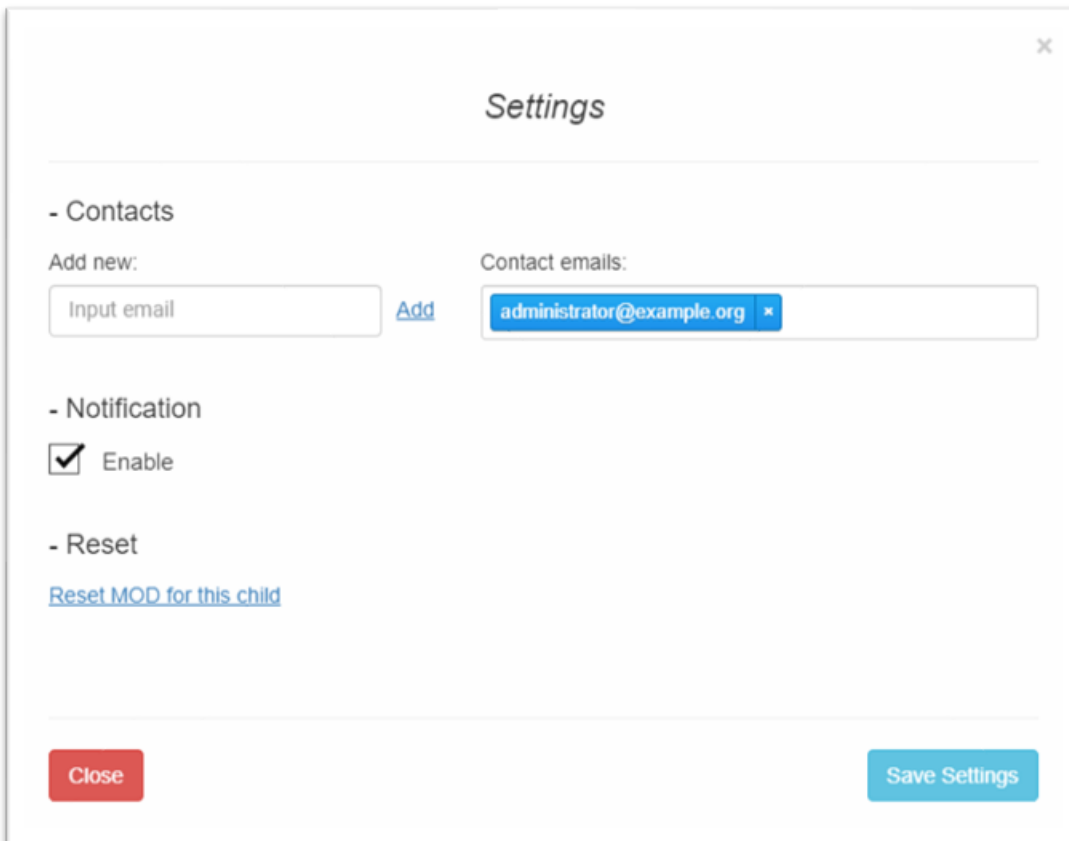
Navigating the MOD

Triggering the MOD and Using the MOD Dashboard

After a MOD unit has been set up for your program, children scoring below benchmark for the applicable IGDI measure(s) will trigger a MOD unit (described in later sections). Additionally, the child's progress dashboard will include a smaller MOD dashboard for navigating strategies, completing MOD steps, and managing setting.



Clicking the settings gear icon on the MOD dashboard allows users to enable/disable notifications for an individual child's MOD as well as manage which email accounts receive notifications for that child. The settings panel can also be used to reset a child's MOD unit, clearing any existing MOD data or decisions for that child.



Getting Started: Is there a Problem?

In order to verify that this ECI assessment accurately reflects his/her actual language proficiency, the MOD asks you to verify that this was accurate assessment. In other words, we want to ensure that there were no unusual circumstances during the assessment, such as a sibling or friend distracting the child, the child was visibly sick, or other anomalies that might have resulted in a low score for this assessment.

If you report that the assessment was not accurate, you will be asked to try to do another assessment for this child within two weeks.

x

Question 1: Validity

Was the assessment valid?

As you can see on the graph, your child's performance on the IGD1 assessment has fallen below benchmark. Do you believe this was an accurate assessment for the child? Issues that could affect the accuracy of the assessment might be that the child appeared to be sick or unusually tired, or there were distractions during the assessment that aren't usually there.

Response

Yes No I don't know N/A

Close Next

Why Is It Happening?

After an ECI that is at least slightly below benchmark and valid, the MOD will ask you three questions about the child to help determine if the child might benefit from some simple family-centered, routines-based language intervention. These questions will help rule out issues such as medical concerns (e.g., hearing loss, ear infection, etc.), and recent major changes in the home or daycare environment.

Question 2a: Why is this happening

Question 2b: Why is this happening

Question 2c: Why is this happening

Child's Environment

Have there been any recent changes in the child's home or child care environment that might affect his/her performance (for example, moving to a new home or day care, or a new language being spoken in the home?)

Response

Yes No I don't know N/A

Close Next

What Should Be Done?

After an assessment is entered below benchmark, is valid, and any medical issues and/or major changes in the child's environment have been accounted for, the MOD will generate specific recommendations for enriching the child's environment. Clicking on the name of strategy will preview the strategy's content. Once the strategies are chosen, they can be saved to be easily viewed later. Users can also download a PDF version of the chosen strategies.

×

Suggested Strategies

Please select which of the Suggested Strategies you feel are most appropriate for this child (Select as many as you feel are appropriate).

- Following Child's Lead and Responsiveness For Children Using Vocalizations and Some Single Words
- Commenting and Labeling For Children Using Vocalizations and Some Single Words
- Imitating and Expanding For Children Using Vocalizations and Some Single Words
- Giving Praise and Positive Attention For Children Using Vocalizations and Some Single Words
- Asking Open-Ended Questions With Children Using Vocalizations and Some Single Words
- Providing Choices For Children Using Vocalizations and Some Single Words
- Time Delay / Fill in the Blank For Children Using Vocalizations and Some Single Words

[Close](#) [Download as PDF](#) [Save](#)

Is It Being Done?

When the recommended strategies for a child are generated, the “Home Visitor’s First Fidelity Checklist” will also become available. The checklist will be used to record the review of recommendations with caregivers during a home visit. After the initial home visit, educators will use the Follow-Up Checklist to record and monitor progress with the implementation of strategies.

Question 4a - Initial Checklist

Initial Fidelity Checklist

Please check each statement or step that you have completed. Complete only use this checklist the first time you go over the invention materials. On each visit after this, use the Follow-Up Fidelity Checklist.

You can download and print the checklist using [this link](#).

Response

- I explained the concerns to the caregiver and showed them the assessment graph.
- I talked to the caregiver about how they can use the strategy(s) across their daily routines.
- I modeled how the caregiver should use the strategy(s).
- I observed the caregiver using the strategy(s).
- The person with who I reviewed the strategies was the child's primary caregiver.
- I helped them pick one (1) or two (2) routines in which they could do the strategies.
- I have them the materials related to the strategies.
- I role-played the strategies together with the parent/caregiver.
- I showed them where to record their usage of the strategies.
- I suggested that they keep the routines sheet and intervention handout in a place they will see it every day.
- I asked if they had any questions.

[Close](#) [Next](#)

×

Question 4b - Follow-Up Checklist

Follow-Up Fidelity Checklist

Please check each statement or step that has been completed during a visit with the child's caregiver.

Response

- I asked the caregiver if they were able to do the strategy(s) after my last visit.
- I asked the caregiver if they were comfortable doing the strategy(s) and asked if they noticed any improvement.
- I talked to the caregiver about how they could continue doing the strategy(s) across some additional routines.
- I talked to the caregiver about how much they have been using the strategy(s).

CloseNext

Is It Working?

After the MOD strategies have been in effect for multiple assessments, a results summary will describe whether the child's data is projected to reach the benchmark within the next 6 months. Depending on the results, additional MOD strategies may be recommended or the MOD may be suspended while the current strategies are maintained.

×

Question 5 - Results Summary

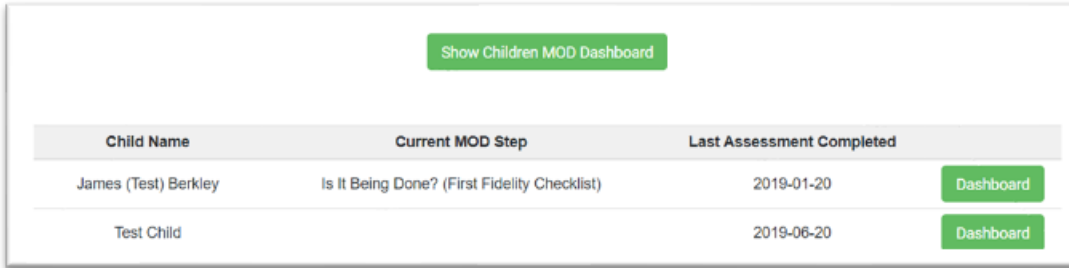
Is it working?

The graph on this child's dashboard shows that their EPSI scores are improving since the beginning of MOD strategy implementation. Please continue working with the child and monitoring progress. If the child falls below benchmark again, the MOD can be reintroduced and new strategies can be selected.

CloseNext

MOD Dashboard

Users can view child MOD progress and quickly access a child's dashboard through the MOD Dashboard on the IGDI home page, below the IGDI Implementation Dashboard. The MOD Dashboard shows a child's current MOD step (if any) as well as their last completed assessment. Click the *Dashboard* button will take users to that child's dashboard page where the child's MOD and IGDI information can be viewed.



The screenshot shows a web interface for the MOD Dashboard. At the top center, there is a green button labeled "Show Children MOD Dashboard". Below this is a table with three columns: "Child Name", "Current MOD Step", and "Last Assessment Completed". The table contains two rows of data. The first row lists "James (Test) Berkley" with a current MOD step of "Is It Being Done? (First Fidelity Checklist)" and a last assessment date of "2019-01-20". The second row lists "Test Child" with a last assessment date of "2019-06-20". To the right of each row is a green button labeled "Dashboard".

Child Name	Current MOD Step	Last Assessment Completed	
James (Test) Berkley	Is It Being Done? (First Fidelity Checklist)	2019-01-20	Dashboard
Test Child		2019-06-20	Dashboard