

Early Communication Indicator (ECI)

Report for Juniper Gardens Sample Program

May 4, 2016

This report is separated into the following three sections:

- [Assessor Information](#) – tables that describe the status, quantity, and other relevant information about your assessors
- [Child Information](#) – tables that describe the number, IFSP status, source of funding, and relevant demographics of the children in your program/project
- [Child Progress](#) – graphs and tables that summarize the progress of children's communication proficiency

Charles Greenwood is the director for the Juniper Gardens Sample Program.

Assessor Information

The Assessor Reports provide information about program staff members who are certified for the ECI, the number of observations conducted, and inter-observer agreement scores (percentage agreement). Assessors are those who: (a) are registered as active in the ECI online database; (b) have a certification date entered in the database, or (c) have completed at least one child assessment.

It is important to note that in addition to administering assessments, these assessors may also code their assessments and enter the data into the data system. Assessors who code and enter their own assessments into the data system are more likely to make data-based decisions about a child's need for intervention; therefore, we encourage this practice. However, it may not be practical depending on a program's resources and organizational structure.

Registered Assessors, Certification Status, and ECI Assessments Completed

Name	Registered Status	Certification Date	ECI Assessments	Last Reliability Check
Baggett, Kathleen	Active	01/10/2012	31	2/14/2016
Ell, Ball	Active	01/27/2012	5	10/09/2014
Garrett, Matthew	Active	03/10/2002	1	12/12/2003
Harry, Dirty	Active	03/10/2011	11	01/09/2012
White, Jack	Active	01/10/2012	4	01/09/2012
White, Snow	Active	10/18/2002	2	09/30/2015
Director, Test	Active	03/12/2014	0	Never
Hill, Lauryn	Active	08/14/2013	0	1/10/2016
Johnson, Tom	Active	03/10/2011	0	Never

ECI Reliability Report -- Percentage Agreement

Percentage Agreement is a measure of the extent to which two observers agree in recording specific instances of the same child's communication. This measure provides important information about the reliability, or accuracy, of ECI assessments. Our goal is 80% or higher in every category. The average overall reliability for your assessors is 90.1%.

ECI Category	Number of Reliability Checks	Average Percentage Agreement	Minimum	Maximum
Gestures	24	89	0	100
Vocalizations	24	90	0	100
Single Words	24	88.3	0	100
Multi Words	24	96	0	100
Total Communications	24	92.75	0	100

Child Information

The Child Information Reports provide descriptive information about the children who have been enrolled and who have received ECI assessments.

Children Enrolled – Active and Inactive

Status	Number of Children	Percentage of Total
Active	110	81.5
Inactive	25	18.5
Total Children	135	100.0

The following tables describe children who are currently active in the ECI database.

Child Age (as of May 4, 2016)

Age Group	Number of Children	Percentage of Total
Under 1 year	17	15.45
1 year olds	32	29.1
2 year olds	47	42.7
3 year olds	14	12.7
Total Children	110	100.0

Child Gender

Gender	Number of Children	Percentage of Total
Girls	39	35.5
Boys	71	64.5

Total Children	110	100.0
----------------	-----	-------

Special Needs Status -- IFSP

Status	Number of Children	Percentage of Total
Children Without an IFSP	93	84.5
Children Who Have an IFSP	17	15.5
Communication	4	3.6
Social	1	0.9
Motor	0	0
Cognitive	1	0.9
Unidentified	7	6.4
Total Children	110	100.0

Primary language Spoken in Child's Home

Language	Number of Children	Percentage of Total
English	98	89.1
Spanish	2	1.8
Creole	2	1.8
Mandarin	0	0
Cantonese	0	0
Japanese	0	0
Vietnamese	1	0.9
Sudanese	6	5.5
Other	1	0.9
Total Children	110	100.0

Source of Funding

Funding	Number of Children	Percentage of Total
Federal	24	21.8
State	74	67.3
Total Children	110	100.0

Child Progress

These reports provide information on the children's progress developing communication proficiency, and thus, the program's effectiveness.

How Many Registered Children Have ECI Data?

In Juniper Gardens Test, 110 active children have been registered. A total of 281 ECI observations have been conducted with these children. 266 of these were monthly monitoring observations (i.e., they occurred 25-40 days following the last observation) across 44 children.

How Many Primary ECI Observations Do Individual Children Have at This Point?

Cumulative Number of ECI Observations	Percentage of Children with that Number of Observations
0	23.6
1	21.8
2	16.4
3	7.3
4	9.1
5	8.2
6	5.5
7	1.8
8	4.5
>8	1.8
	100.0

Type and Location of Observations

Form Type	Number of Observations	Percentage of Total
Barn	207	73.7
Home	157	55.9
Center	36	12.8
Other	3	1.1
House	74	26.3
Home	56	19.9
Center	13	4.6
Other	3	1.1
Total Observations	281	100.0

Languages of Administration

Language of Administration	Number of Observations	Percentage of Total
English	276	98.2
Spanish	1	0.4
Creole	0	0
Mandarin	2	0.7

Cantonese	0	0
Japanese	0	0
Vietnamese	0	0
Other	2	0.7
Total Observations	281	100.0

Condition Changes Recorded in the Observations

Condition Change	Number of Observations	Percentage of Total
Child Psychiatrist	5	1.8
Interpreter	3	1.1
Language Intervention Tool Kit	9	3.2
Medical Intervention (e.g., Tubes)	1	0.4
Mental Health Consultant	1	0.4
Milieu or Incidental Teaching	1	0.4
MOD Recommendations	20	7.1
None	229	81.5
Other	2	0.7
Previous Intervention Discontinued - NO new intervention	1	0.4
Promoting Communications Strategies	0	0
Registered Nurse	0	0
Responsive Interaction	0	0
Social Worker	2	0.7
Speech/Language Therapist	3	1.1
Total Observations	281	100.0

Communication Distribution for Children in the Program

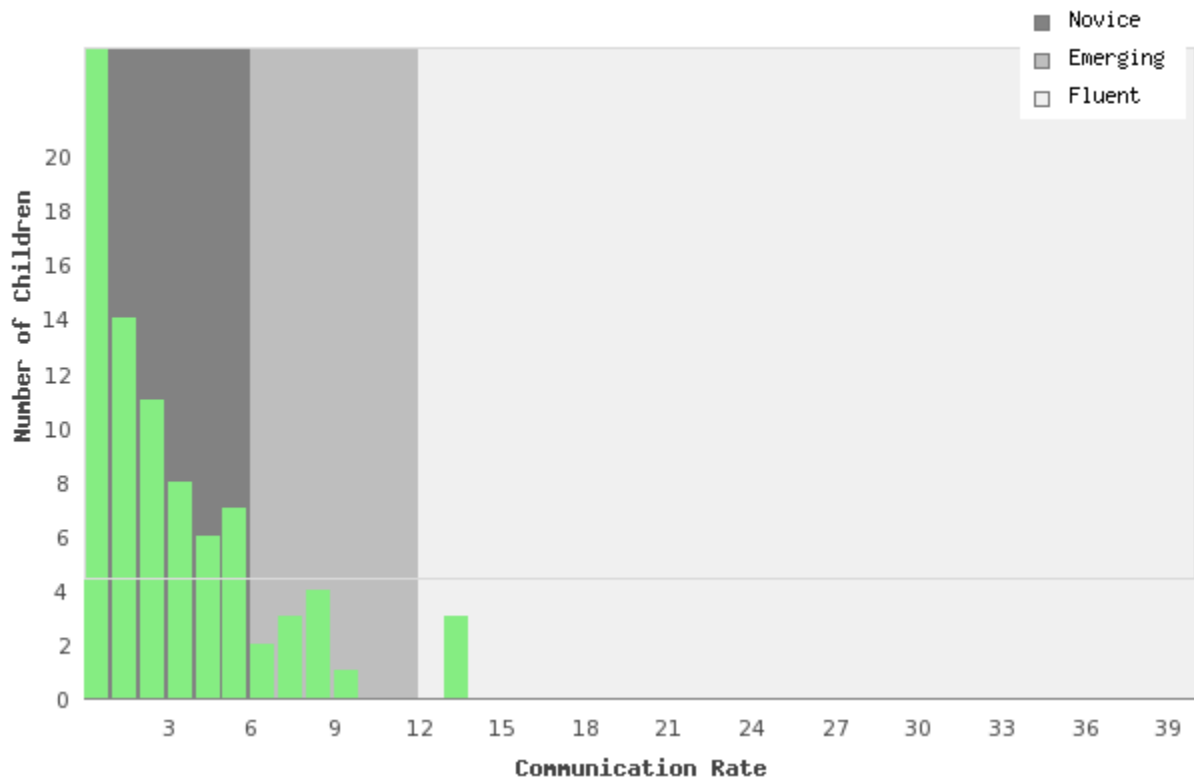
This frequency histogram shows the number of children at various levels of total communication fluency across the range of 0 to 43 (the maximum level), based on their most recent assessments. This distribution provides a point in time look at the communication status of all children in the program. Based on the total communication fluency of a 36 month old as a desired outcome for all children to achieve, we define three groups of communicators based on the total communication score: Fluent, Emerging, and Novice.

Fluent communicators are children with total communication scores of 12 per minute and higher (They have all key skills in evidence).

Emerging communicators are children with total communication scores between 6 and 12 per minute (They are acquiring words and multiple words).

Novice communicators are children in transition from prelinguistic to spoken language between 0 and 6 per minute. (They are primarily prelinguistic communicators).

Clearly, children's age and experience strongly affects the numbers of children at these levels in a project, as does the conditions in their lives that promote communication. This chart enables program staff the ability to know where on the path to communication proficiency their children are at this point in time.



Children Who Are on Target, Slightly Below (> = -1.0 SD), or Below Benchmark (> = -1.5 SD) in Total Communication Development Based on Their Latest ECI Measurement

The first table below shows the number and percentage of children in each age group whose most recent ECI total communication rate is on target, slightly below (-1.0 SD), or below benchmark (-1.5 SD) as indicated by normative benchmarks. Benchmarks are based on the performance of children in previous research.

*Age Group	Proficiency Status			
	On Target	Slightly Below Benchmark	Below Benchmark	Total
1-11 Months	4 33.3%	0 0%	8 66.7%	12 100.0%
12-23 Months	8 25.8%	0 0%	0 74.2%	8 100.0%
24-35 Months	3 11.5%	2 7.7%	5 80.8%	10 100.0%
36-47 Months	1 9.1%	0 0%	1 90.9%	2 100.0%
Overall	16 23.8%	2 2.4%	14 73.8%	32 100%

**Age of children at their last observation*

Children Who Are Off Target in Communication Development and Who Warrant Special Attention

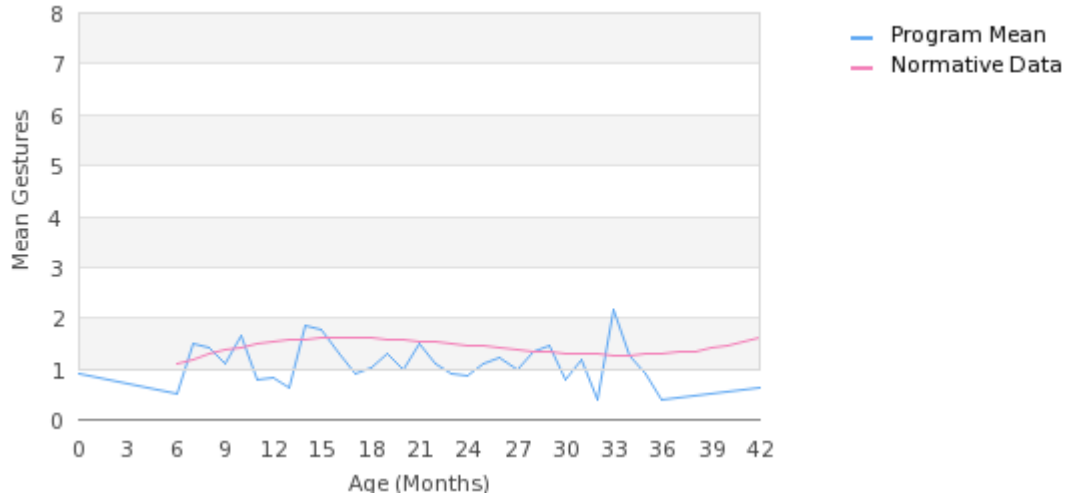
Child Name	Age@Last Observation(Months)	Proficiency Status	Currently on Monthly Monitoring?*	Total Number of Monthly Monitoring Assessments**
Cute, Dana	10	Slightly Below Benchmark	No	4
Cute, Kevin	13	Below Benchmark	No	0
Doe, Jane	42	Below Benchmark	No	1
Oyle, Olive2	28	Below Benchmark	No	9
Juniper, Jenny	23	Below Benchmark	No	3
Mays, Isaiah	25	Below Benchmark	No	7
Springsteen, Bruce	29	Below Benchmark	No	5
Skinner, BF	29	Slightly Below Benchmark	No	5
Hill, Abbey	42	Below Benchmark	No	10
Ortiz, Maria	12	Below Benchmark	No	0
Trujillo, Daniel	12	Below Benchmark	No	0
Smith, John	41	Below Benchmark	No	3
Shran, Thy'lek	20	Below Benchmark	No	3
James, Jim	21	Below Benchmark	No	5
Testing, Status	38	Below Benchmark	No	0
Norman, NewTest	5	Below Benchmark	No	3

**Last two assessments are between 14 and 45 days of each other*

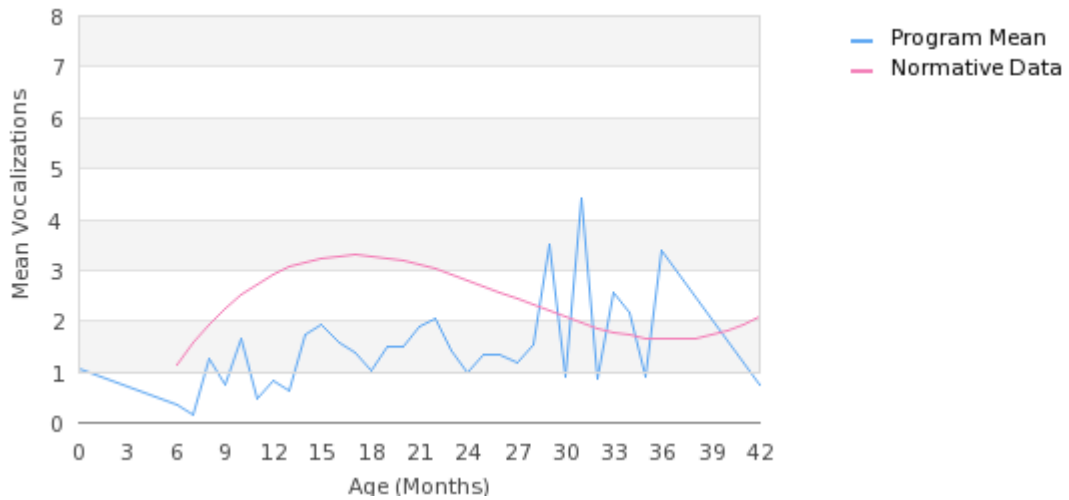
***Number of assessments that are between 14 and 45 days of each other*

Average Trend in Key Skill Elements for Children in the Program

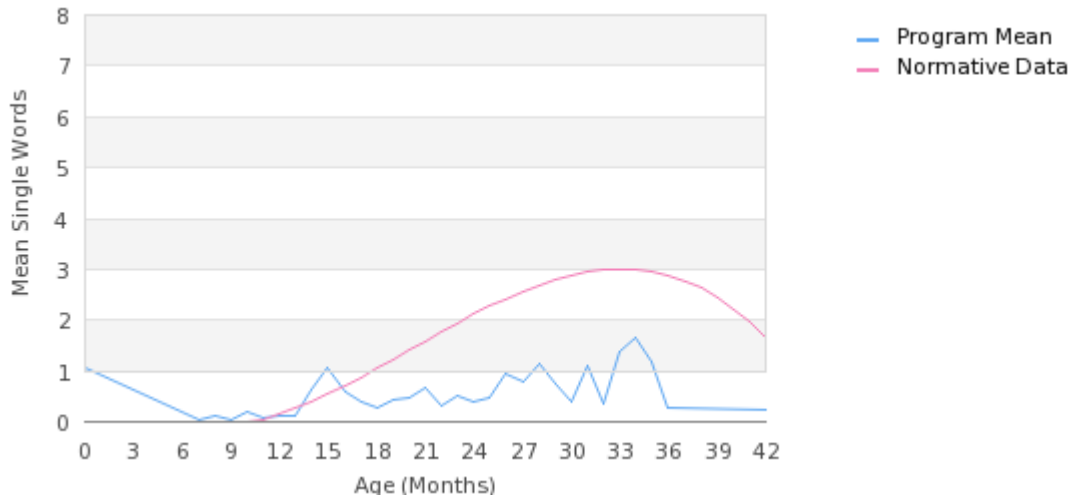
The average rate of gestures



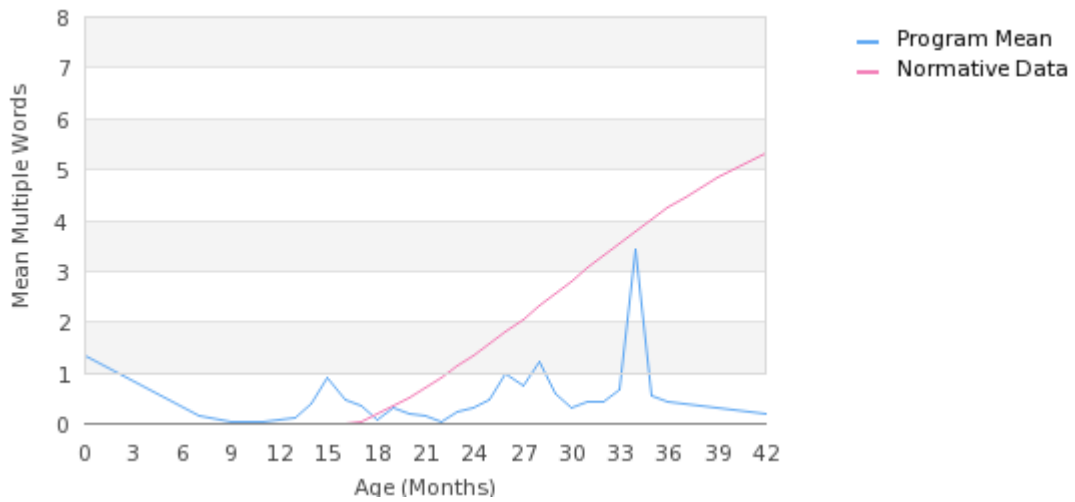
The average rate of vocalizations (non-words)



The average rate of single word communications



The average rate of multiple word communications



The final graph illustrates average growth in children's rate of weighted total communication with gestures, vocalizations, single words, and multiple words combined.

